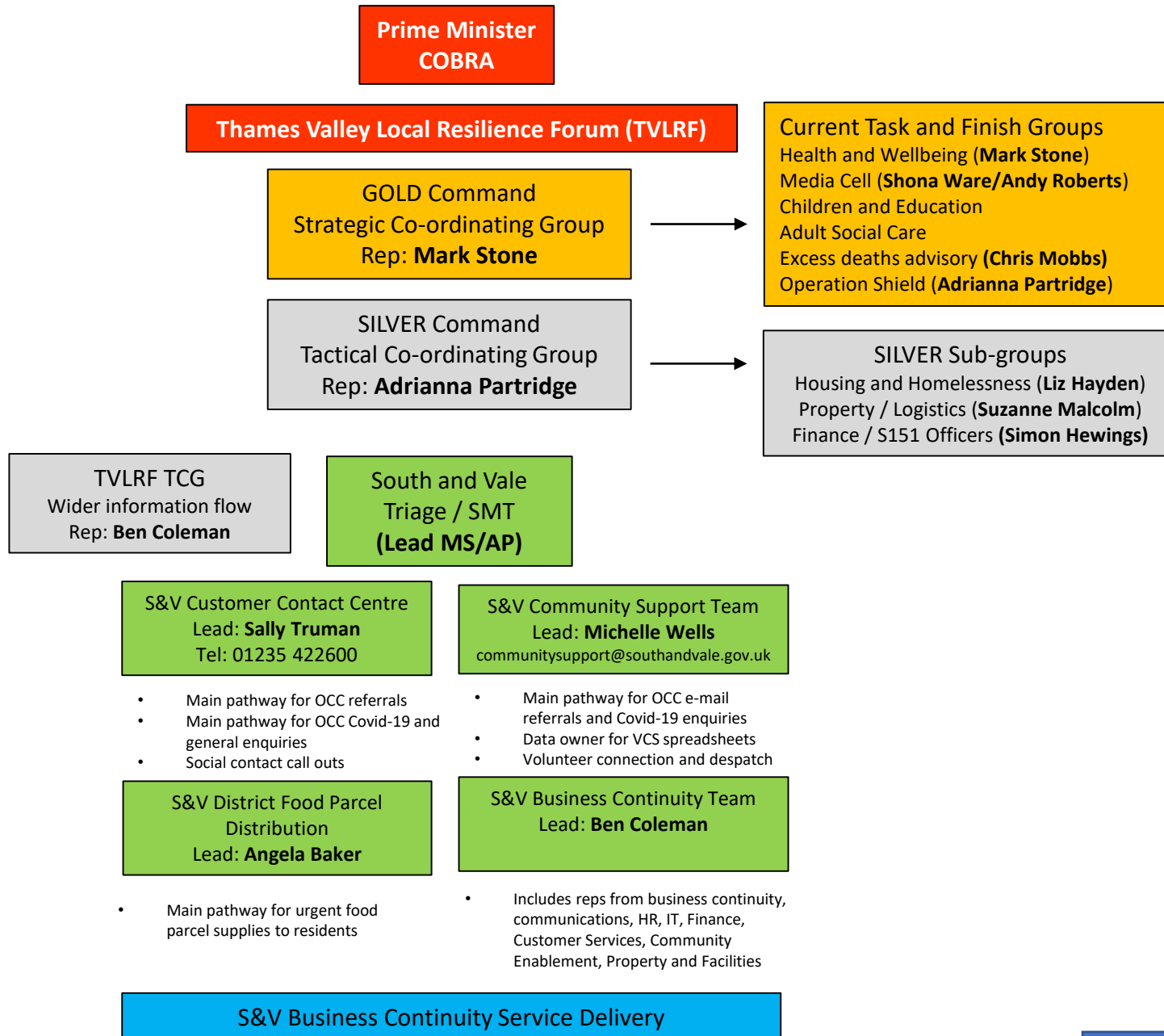


South and Vale Command and Control Structure under the Thames Valley Local Resilience Forum



Resident Journey

Central NHS Initiative

Website: www.gov.uk/coronavirus-extremely-vulnerable
Automated Triage Call Centre
Human Call Centre

Oxfordshire Wide System – High Risk and Social Care Clients

For high risk residents **not in** Oxford City
Telephone: 01865 897820
(8:30am – 8pm Mon-Fri, and 9am – 5pm Sat-Sun)

E-mail: shield@oxfordshire.gov.uk

For high risk residents **in** Oxford City
Telephone: 01865 249811 (8am – 5pm)
Website: www.oxford.gov.uk/CommunityAssistance

General support websites
www.oxfordshireallin.org

For Oxford City residents
<https://www.oxfordhub.org/oxford-together>

South and Vale Local Community Support System

For **all** referrals and general enquiries
8:30am – 8pm Mon-Fri and 9am – 5pm Sat-Sun

Telephone: 01235 422600

E-mail: communitysupport@southandvale.gov.uk

Websites:
<http://www.southoxon.gov.uk/news-events/coronavirus-covid-19-information>

<http://www.whitehorsedc.gov.uk/news-events/coronavirus-covid-19-information>

Community Volunteer Groups